



Proposed site plan

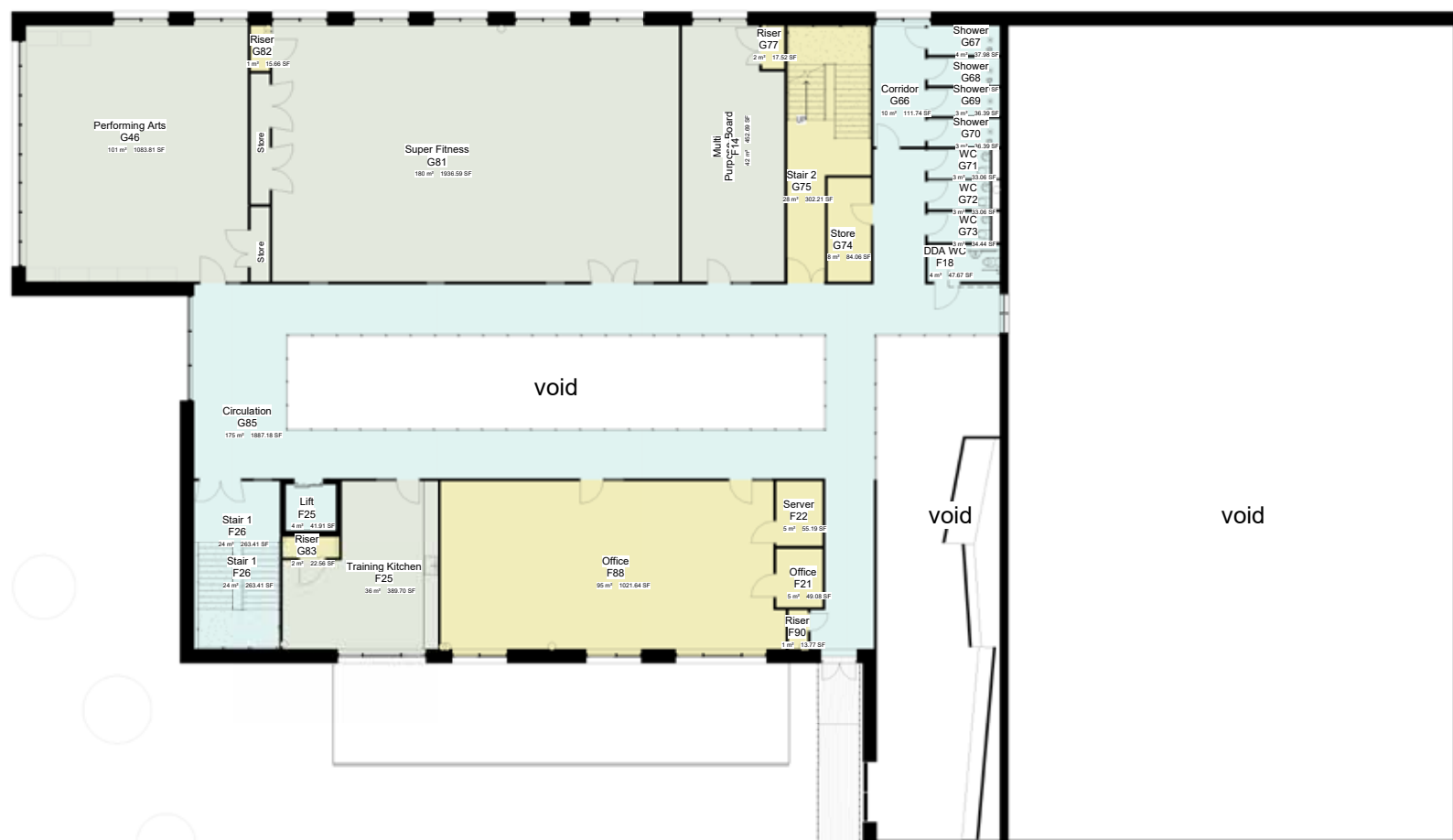


Site constraints



Site photo

The site is bounded to the west by busy traffic flow and low level housing to the north. The most special features of this site are the large, established trees to the south and west. The design approach utilises the gaps within the trees to help the building sit comfortably with its surroundings and allow views out of the interior spaces.



The plan has been organised around the recreation area which is highly visible at the entrance and connects through all the main activities, encouraging young people to get involved. Corridors have been minimised, with all major activities facing onto this space. The climbing wall and sports hall are located at the end of the Rec drawing people in, creating an exciting focal point upon arrival to the building.



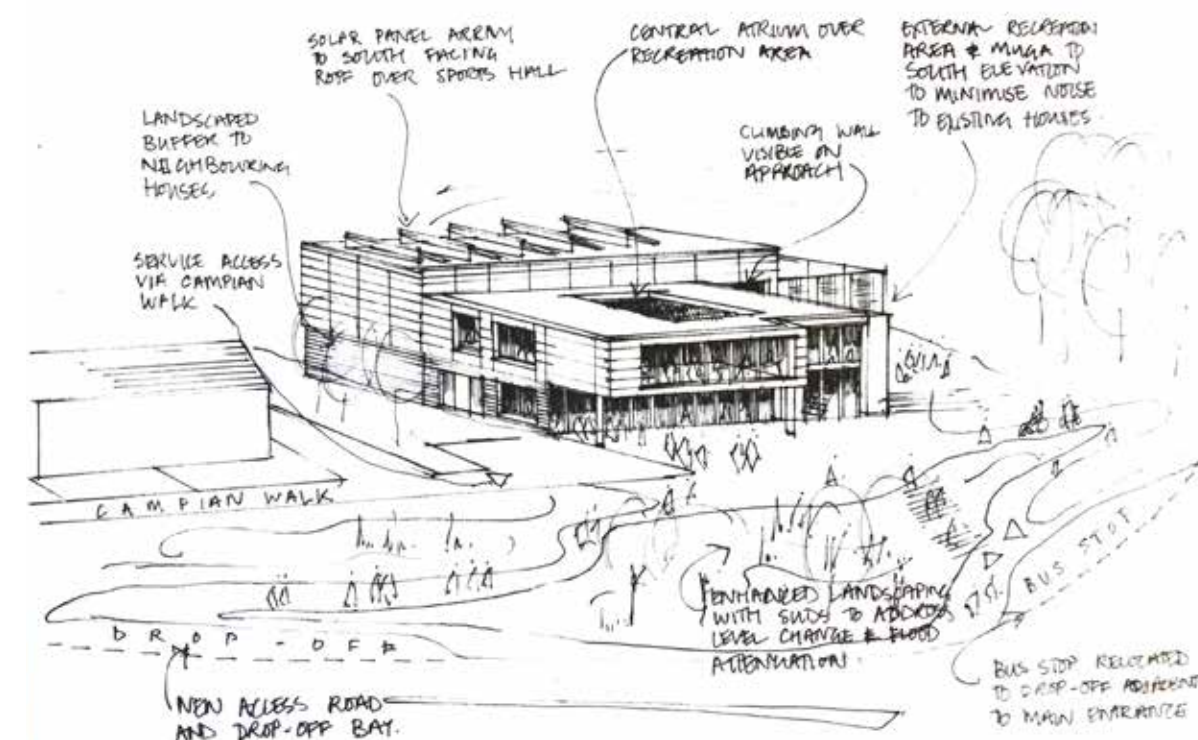
Proposed entrance visual



Proposed west elevation



Aerial view



Concept sketch

Our design is a careful arrangement of individual volumes nestled within the mature trees on site which serve as visual and solar screening. The arrangement also responds to the main pedestrian flow from the location of drop-off area creating a strong presence when viewed along Hartcliffe Way. The building is hunkered within the landscape however the two storey building increases prominence and visibility.



Site axo -with roof removed



View from Dowland Grove

A wide range of facilities are on offer to young people in the Youth Zone including a sports hall, fitness suite, performance & music rooms, arts workshops and cafe. To the south of the building is a secure, covered external recreation area and kick-pitch which provides a safe place for activities and exercise within the open-air.



North elevation



View from Hartcliffe Way



Internal Rec visual

The facade materials are from a simple palette of green-pigmented cladding, bronze metal panels and warm grey brickwork plinth. The green cladding responds to the local environment and allows the building to sit sympathetically within the trees. This is complimented with the warm-grey ground floor walls which will emphasise the sense of the building being set within landscape and complimented by the tree canopy.



South elevation

Brickwork to Ground Floor



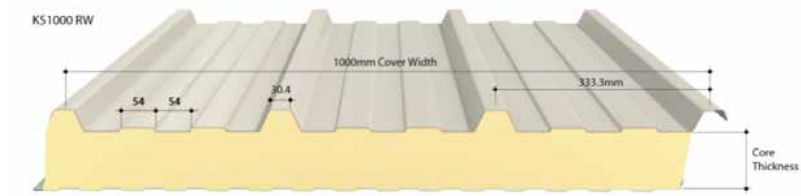
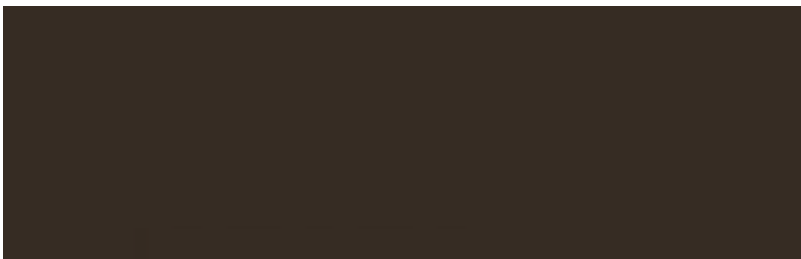
MBH Plc Blockleys - Windermere Grey brickwork with recessed dark grey mortar joints.

Cladding to First Floor



Valcan Ceramapanel- Fibre Cement Rainscreen Panels, open jointed, rivet face fixed 3.05x2.05m panels laid vertically.
Ref: 2061 Somerset Apple, 1061 Eucalyptus, 1011 Rain Cloud

Cladding to Sports Hall



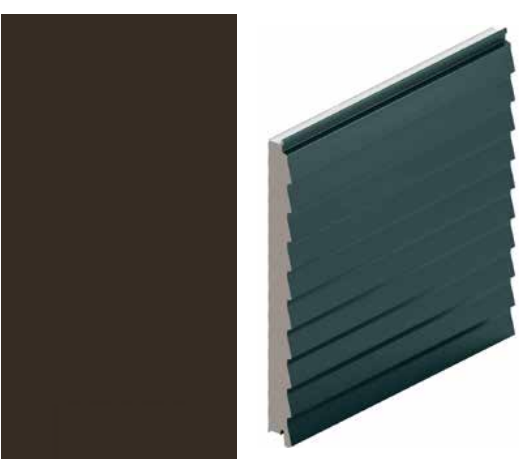
Kingspan KS1000RW Insulated metal panel - Van Dyke Brown RAL 8014 laid vertically

Metal Louvres for plant screening



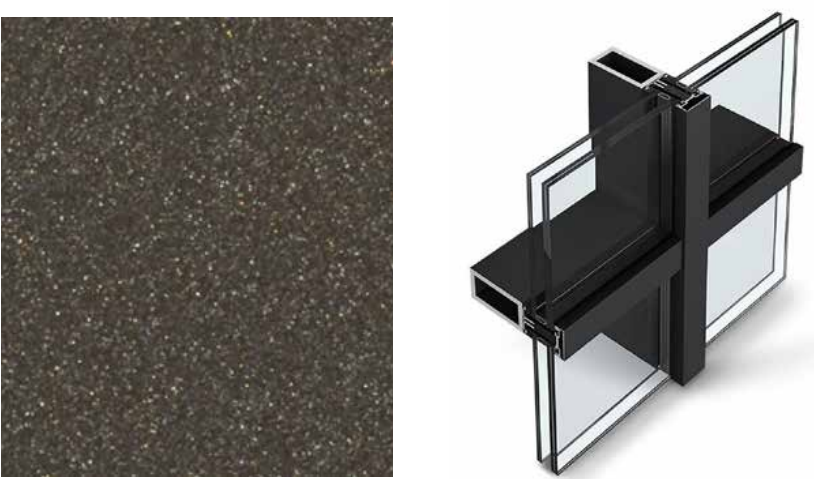
Orsogrill Italia-80i Polyester powder coated RAL 8080 Dark Bronze

Metal Louvres to Roof stair



Kingspan KS1000LV Insulated metal panel - Van Dyke Brown RAL 8014 (image illustrated for reference)

Metal Doors and Windows



Kawneer AA100 50mm polyester powder coated Ebony XDMC 002

External Paving



Marshalls Saxon Paving textured concrete 600x300mm

External material proposals

- The design concept for the treatment of elevations aims to achieve the following design criteria:
- High quality and robust finishes that will ensure longevity of the facades.
 - A contemporary and exciting aesthetic which appeals to children of all ages.
 - Muted autumnal colour and texture introduced through patterns on the facade.
 - Creating playfulness and depth of facades and providing natural solar shading.
 - Sports Hall treatment to consider breaking down the massing.
 - Reference colours, textures, shapes and patterns that are used in the wider townscape.